



Installation Instructions – ALL – JMS FleetMAX Kit Part Numbers

Included in each FleetMAX Kit:

- (1) FleetMAX Control Box (Black)
- (1) Main Wire Harness
- (1) 12v wire harness with terminal lug
- (1) Secondary Wire Harness
- (9) Cable Ties

Please read the complete installation instructions before attempting to install this product.

FleetMAX has been designed to limit the speed of your vehicle and limit the torque output of your vehicle. Speed limit and torque values have been pre-programmed or the values can be adjusted using our optional hand-held controller.

FleetMAX connects to the accelerator pedal and is tie strapped up under the dash away from the accelerator pedal sensor. Two wires connect to the main FleetMAX harness and run through a grommet in the firewall of the vehicle. These two wires connect to the +12v constant power stud and to the ABS sensor.

Important: Disconnect the positive terminal of the battery before installing this product.

Step 1 - Connect FleetMAX to the Main Harness.

Attach the FleetMAX device to the wiring harness; plug the device into the 26-pin connector firmly, until latched.



Step 2 - Locate the pedal position sensor assembly.

The connector for the pedal position sensor is typically located near the top of the accelerator pedal.



Step 3 - Unplug the OE wiring harness from the pedal position sensor.

Notes:

To separate most connectors from the sensor: slide back or release the RED locking tab on the harness connector, press the tab down on the connector and unplug from the pedal position sensor.

On some connectors, when you pull the red tab the connector separates from the pedal position sensor.



Step 4 – Connect FleetMAX Harness – In-Line.

The FleetMAX main wire harness connects in-line between the pedal position sensor and the OE wiring harness.

Connect the male and female FleetMAX connectors to the Original Factory wire harness connector and to the pedal position sensor.

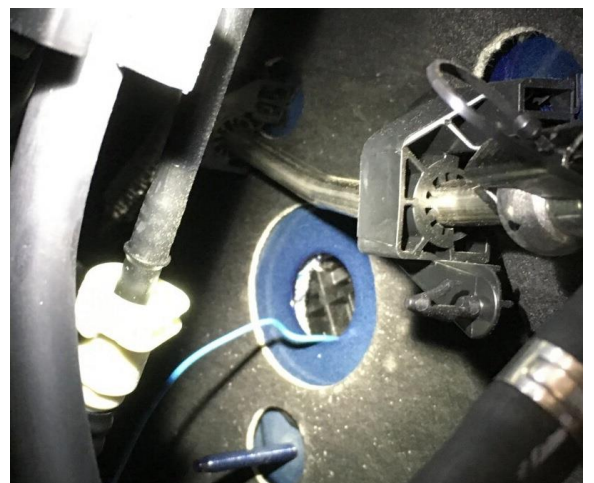


Step 5 – Route the two cables through a grommet in the firewall.

Route the single +12v cable and the ABS sensor cable through an existing grommet in the firewall.

Notes:

Each vehicle has unique firewall openings. Be sure to keep the wires away from sharp edges. A guide wire or guide string can help route the wires.



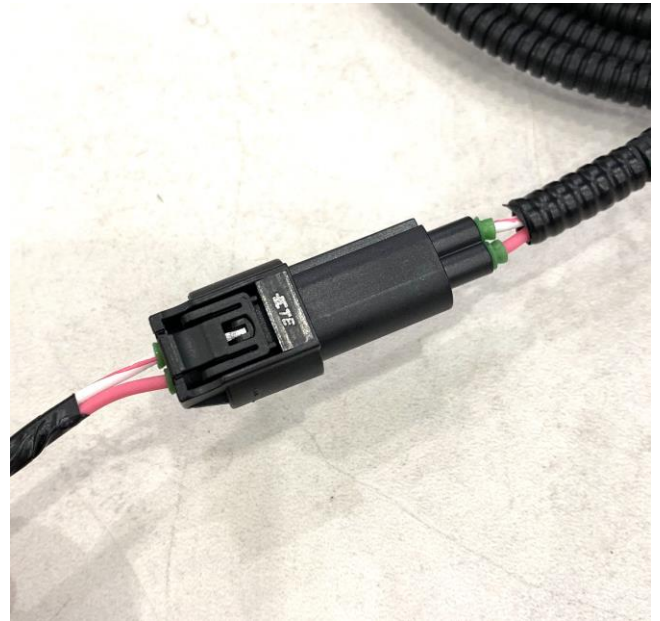
Step 6 – Connect +12v input, single wire to the main FleetMAX harness.

Route the single +12v wire through a firewall grommet and connect to the main FleetMAX harness.



Step 7 – Connect single connector, sub-harness to the main FleetMAX harness.

Route the two wire ABS sensor sub-harness through a firewall grommet and connect to the main FleetMAX harness.

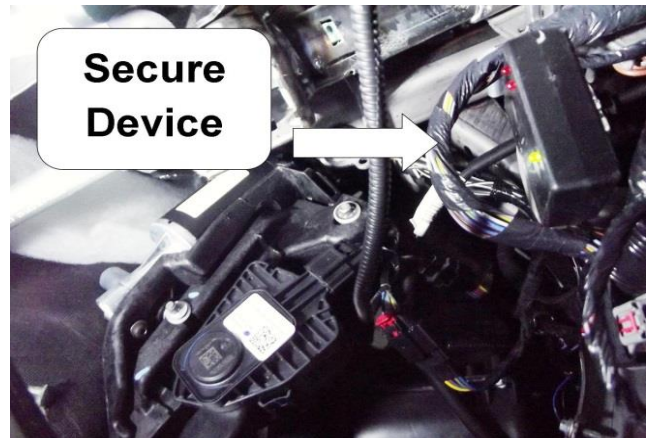


Step 8 - Secure FleetMAX under the dashboard.

After connecting the +12v and ABS sub-harness to the main harness, secure FleetMAX and the main harness under the dashboard using the supplied cable ties.

Notes:

The device should not be left hanging loosely or unsecured. Do not attach or mount to any moving assemblies such as the steering column.



Step 9 – Connect the ABS sub-harness in-line in-between an ABS sensor and the OE ABS harness.

Secure the ABS sensor sub-harness away from sources of heat or items that mechanically move.

Notes: Typically, the ABS Sensor connector is located near the wheel on the frame.

To disconnect, slide back or release the RED locking tab on the harness connector, press the tab down on the connector and unplug from the pedal position sensor.

Some connectors might require that you push the RED locking tab back from the opposite side of the connector using a small screwdriver.



Step 10 – Connect the +12v red ring terminal directly to the battery or power distribution stud and reconnect the +12v battery terminal.

Connect the ring terminal from the +12-volt input harness directly to the positive side battery cable or to the positive battery distribution terminal. You can also attach the 12-volt ring terminal to another 12-volt source such as the main power stud from the fuse box.

Notes:

Connect the +12v ring terminal to constant +12v.



Verify all of your connections; verify that the wire harness and device is strapped secure.

(Step 1) FleetMAX Black Box connected to the Main FleetMAX Harness.

(Step 4) Main FleetMAX Harness connected in-line, in between the Pedal and OE Harness.

(Step 6) Connect the +12v sub-harness to the Main FleetMAX Harness.

(Step 7) Connect the ABS sub-harness to the Main FleetMAX Harness.

(Step 9) Connect the ABS sub-harness in-line, in-between the ABS Sensor and OE ABS Sensor Harness.

(Step 10) +12v ring terminal connects to constant +12v battery power (power stud/battery).

Test the device – When the installation is complete and the FleetMAX device and harness is secured, insert the ignition key, and start the vehicle. Verify that everything functions ok and that no check engine lights are illuminated on the dash.

Test drive the vehicle – Drive the vehicle under normal conditions.

When you reach the pre-programmed top speed, the vehicle will stop accelerating.

Troubleshooting:

- **Check Engine Light after install** - If you experience a check engine light and do not have pedal response after starting the vehicle immediately following installation:
 - **If you have a KEY** - turn the key back to the off position, remove the ignition key, wait 60 seconds for the ECU to reset and then restart the vehicle. When you restart the vehicle, the check engine light will be gone and pedal response will be restored.
 - **If you have a key FOB**: make sure that the vehicle is off and that the dash lights are off for at least 60 seconds. When you restart the vehicle, the check engine light will be gone and pedal response will be restored.
- **ABS Light after install** – Verify that the ABS Harness is connected (Steps 7&9), Verify that the unit is powered ON (Green LED illuminated with the key on).
- **LED Diagnostic Lights:**
 - **Green LED light** = Solid LED, device is powered ON and working
 - **Green, Yellow & Blue LED's Flashing** = Pedal is not connected.
 - **Key ON and the GREEN LED is NOT ON** = Missing the +12v Power, verify that the +12v wire is connected to constant +12v.

Optional Handheld – The optional handheld device allows FleetMAX to be reprogrammed and adjusted “on-the-fly”. Plug the four pin connector from the unit into the Main FleetMAX harness and follow the adjustment menus.

FleetMAX Options:

- **Top Speed Limit** - set and adjust the vehicles top speed "on-the-fly".
- **Torque Reduction Percentage** - reduce the amount of torque available to the driver.
- **Emergency LEO Top Speed Bypass** - when the emergency lights are on, the FleetMAX speed limiter is bypassed.
- **Stomp Percentage** - reduce the amount of shock to the drivetrain.
- **Over-Speed Passing Timer** - safe driving, earns passing time above the pre-set speed limiter.





Supported - GM Vehicles

FX71015GM Supports the Following GM Vehicles:

- 2008-2020 Buick Enclave
- 2011-2016 Cadillac CTS
- 2006-2011 Cadillac DTS
- 2005-2012 Cadillac STS
- 2004-2009 Cadillac XLR
- 2010-2015 Chevrolet Camaro
- 2014-2017 Chevrolet Caprice PPV
- 2006-2013 Chevrolet Corvette
- 2006-2013 Chevrolet Impala
- 2014-2016 Chevrolet Impala - Limited
- 2008-2020 Chevrolet Equinox
- 2009-2020 Chevrolet Traverse
- 2008-2020 GMC Acadia
- 2010-2020 GMC Terrain

FX71015GMT Supports the Following GM Vehicles (trucks):

- 2011-2019 Cadillac Escalade
- 2008-2019 Cadillac Escalade EXT
- 2008-2019 Cadillac Escalade ESV
- 2008-2013 Chevrolet Avalanche
- 2012-2013 Chevrolet Captiva Sport
- 2008-2018 Chevrolet Silverado 1500
- 2008-2019 Chevrolet Silverado 2500
- 2008-2019 Chevrolet Silverado 3500
- 2008-2019 Chevrolet Suburban
- 2008-2019 Chevrolet Tahoe
- 2008-2009 Chevrolet Trailblazer
- 2008-2019 GMC Sierra 1500
- 2008-2019 GMC Sierra 2500
- 2008-2019 GMC Sierra 3500
- 2008-2019 GMC Sierra Denali
- 2008-2019 GMC Yukon
- 2008-2019 GMC Yukon Denali

FX71015GMV2 Supports the Following GM Vehicles:

- 2011-2013 Chevrolet Caprice PPV
- 2008-2020 Chevrolet Colorado
- 2008-2020 Chevrolet Cruze
- 2014-2020 Chevrolet Impala
- 2012-2016 Malibu
- 2008-2020 Chevrolet Express 1500, 2500, 3500, 4500
- 2006-2011 Chevrolet HHR
- 2006-2010 Hummer H3
- 2013-2017 Cadillac XTS
- 2008-2016 Cadillac SRX
- 2008-2020 GMC Canyon
- 2008-2020 GMC Savana 1500, 2500, 3500, 4500

FX71415GM Supports the Following GM Vehicles:

- 2013-2020 Cadillac ATS
- 2016-2020 Cadillac CTS
- 2016-2020 Cadillac CT6
- 2017-2020 Cadillac CTS
- 2014-2020 Chevrolet Corvette C7
- 2014-2018 Chevy SS sedan
- 2016-2020 Chevrolet Camaro
- 2016-2020 Chevrolet Malibu
- 2014-2020 Chevrolet Caprice

FX71920GMT Supports the Following GM Vehicles:

- 2019-2020 Chevrolet Silverado (Gas)
- 2019-2020 CMC Sierra (Gas)

FX71920GMV3 Supports the Following GM Vehicles:

- 2019-2020 Chevrolet Volt
- 2019-2020 Chevrolet Equinox
- 2019-2020 Chevrolet Blazer



Supported - FORD Vehicles

FX71114F Supports the Following FORD Vehicles:

- 2011-2020 Ford F-150
- 2011-2020 Ford F-250
- 2011-2020 Ford F-350
- 2011-2020 Ford F-450
- 2011-2020 Ford F-550
- 2011-2020 Ford Mustang
- 2011-2020 Ford Focus
- 2011-2020 Ford Fusion
- 2011-2020 Ford Taurus
- 2011-2020 Ford Edge
- 2011-2020 Ford Escape
- 2012-2020 Ford Flex
- 2011-2020 Ford Explorer
- 2011-2020 Ford Expedition
- 2012-2020 Ford C-Max
- 2012-2020 Ford B-Max
- 2010-2020 Ford S-Max
- 2011-2020 Ford Transit Connect
- 2011-2020 Ford Transit 150
- 2011-2020 Ford Transit 250
- 2011-2020 Ford Transit 350
- 2011-2020 Ford Transit 350 HD
- 2014-2020 Police Interceptor Utility
- 2013-2020 Police Interceptor Sedan
- 2011-2020 Ford Ranger T6 (Export)
- 2016-2020 Lincoln MKC
- 2011-2020 Lincoln MKX
- 2013-2020 Lincoln MKZ
- 2011-2020 Lincoln MKS
- 2011-2020 Lincoln MKT
- 2011-2020 Lincoln Navigator
- 2016-2020 Jaguar F-Type
- 2016-2020 Jaguar F Pace
- 2016-2020 Jaguar XE
- 2016-2020 Jaguar XK
- 2016-2020 Jaguar XF
- 2016-2020 Jaguar XJ
- 2016-2020 Range Rover
- 2016-2020 Land Rover

FX70510F Supports the Following Ford Vehicles:

- 2008-2011 Ford Crown Victoria
- 2005-2010 Ford Mustang
- 2008-2010 Ford Taurus
- 2007-2010 Ford Edge
- 2005-2008 Ford Expedition
- 2005-2010 Ford Explorer
- 2007-2010 Ford Explorer Sport Trac
- 2008 Ford F-150
- 2006-2010 Ford F-250
- 2006-2010 Ford F-350
- 2006-2010 Ford F-450
- 2006-2010 Ford F-550
- 2009-2010 Lincoln MKS
- 2009-2010 Lincoln MKZ
- 2007-2010 Lincoln MKX
- 2008-2011 Lincoln Town Car
- 2006-2008 Lincoln Mark LT
- 2005-2008 Lincoln Navigator

FX70510FV2 Supports the Following Ford Vehicles:

- 2006-2010 Ford Fusion
- All other 2004-2010 Ford car or truck with 10-pin Pedal connector

FX70510FV3 Supports the Following Ford Vehicles:

- 2003 Ford F-250
- 2003 Ford F-350
- 2003 Ford F-450
- 2003 Ford F-550
- 2003-2005 Ford Excursion

FX71415ST Supports the Following Vehicles:

- 2013-2020 Ford Fiesta and Fiesta ST



Chrysler - Dodge - Ram – Fiat – Jeep Vehicles

FX71114DCX Supports the Following Vehicles:

- 2008-2019 Dodge Challenger
- 2006-2019 Dodge Charger
- 2007-2011 Dodge Dakota
- 2006-2013 Dodge Durango
- 2007-2011 Dodge Nitro
- 2007-2019 Dodge Ram 1500 (Classic)
- 2007-2019 Dodge Ram 2500
- 2007-2019 Dodge Ram 3500
- 2008-2019 Dodge Ram 4500
- 2008-2019 Dodge Ram 5500
- 2005-2020 Chrysler 300
- 2011-2020 Jeep Compass
- 2007-2020 Jeep Grand Cherokee
- 2007-2020 Jeep Patriot
- 2007-2018 Jeep Wrangler JK

FX71114DCX2 Supports the Following Vehicles:

- 2011-2016 Chrysler 200
- 2007-2010 Chrysler Sebring
- 2008-2014 Dodge Avenger
- 2007-2012 Dodge Caliber
- 2009-2015 Dodge Journey
- 2007-2020 Jeep Compass
- 2007-2020 Jeep Patriot

FX71114DCX3 Supports the Following Vehicles:

- 2012-2020 Fiat 500
- 2015-2016 Chrysler 200
- 2014-2015 Dodge Dart
- 2015-2020 Jeep Cherokee

FX71114DCX5 Supports the Following Vehicles:

- 2003-2007 Dodge Truck

FX71920DCX4 Supports the Following Vehicles:

- 2019-2020 Dodge Ram Truck (Gas)
- 2018-2020 Jeep Wrangler JL and JT

Toyota – Lexus – Infinity Vehicles

FX71116TYV1 Supports the Following Vehicles:

- 2003-2009 Toyota 4 Runner
- 2007-2014 Toyota FJ Cruiser
- 2005-2020 Toyota Tacoma

FX71116TYV2 Supports the Following Vehicles:

- 2007-2016 Toyota Camry
- 2008-2013 Toyota Corolla
- 2008-2020 Toyota Highlander
- 2009-2014 Toyota Matrix
- 2010-2014 Toyota Sienna
- 2009-2014 Toyota Venza
- 2008-2015 Toyota Land Cruiser
- 2008-2015 Toyota Sequoia
- 2007-2020 Toyota Tundra
- 2012-2014 Toyota Yaris
- 2013-2015 Toyota Avalon
- 2010-2020 Toyota 4 Runner
- 2009-2020 Toyota Rav 4
- 2012-2016 Toyota FRS
- 2017-2020 Toyota 86
- 2012-2016 Subaru BRZ
- 2010-2020 Lexus GX460
- 2008-2020 Lexus LX570
- 2013-2020 Lexus ES300H
- 2007-2020 Lexus ES350
- 2010-2020 Lexus RX350
- 2010-2020 Lexus RX450H
- 2015-2016 Infinity QX60
- 2012-2020 Subaru BRZ

FX71116TYV3 Supports the Following Vehicles:



- 2017-2020 Toyota Camry
- 2014-2020 Toyota Corolla
- 2018-2020 Lexus RC F

Subaru Vehicles

FX71518SBV1 Supports the Following Vehicles:

- 2015-2020 Subaru WRX

Jaguar – Range Rover – Land Rover Vehicles

FX71114JGV1 Supports the Following Vehicles:

- 2014-2015 Jaguar F-Type
- 2016-2015 Jaguar F Pace
- 2016-2015 Jaguar XE
- 2010-2015 Jaguar XK
- 2011-2015 Jaguar XF
- 2011-2015 Jaguar XJ
- 2011-2015 Range Rover
- 2011-2015 Land Rover